



## The Scientific Data, Collaboration & Quality Management Platform



**LabDrive** is LabLynx's robust, cloud-based **Scientific Data Management System (SDMS)**, purpose-built to meet the demanding data handling needs of modern laboratories. LabDrive offers a secure and collaborative environment for managing scientific files, documents, and data across departments, projects, and locations.

With **end-to-end encryption**, **version control**, and **file locking**, LabDrive ensures that all research materials—from SOPs and raw data to reports and collaborative drafts—are safely stored, accurately tracked, and protected from unauthorized changes. Its intuitive interface and real-time editing tools empower teams to co-author documents, assign tasks, and share files while maintaining full traceability and regulatory compliance.

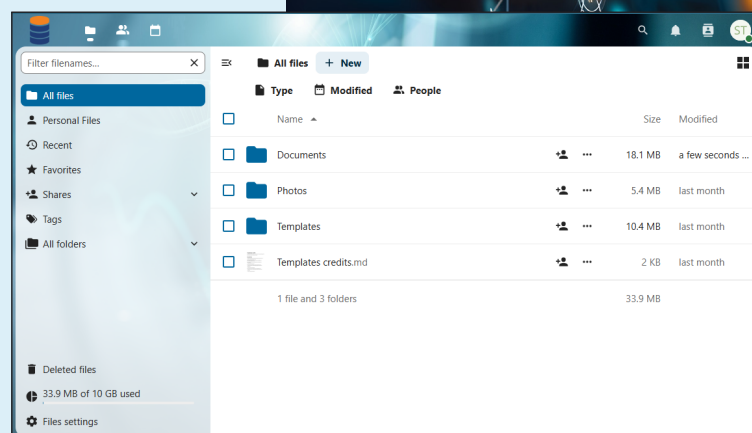
Designed with flexibility and scalability in mind, LabDrive supports deployment in both **cloud-hosted** and **on-premises** environments, making it suitable for organizations of all sizes and regulatory profiles. Whether you're a startup lab or a multi-site enterprise, LabDrive adapts to your workflow needs and IT infrastructure.

### Backed by LabLynx's unmatched expertise in laboratory informatics, LabDrive comes with comprehensive support services, including:

- **Full Implementation Assistance:** From planning to deployment, LabLynx ensures smooth setup aligned with your lab's objectives.
- **Custom Onboarding & Training:** Tailored programs to accelerate user adoption and maximize return on investment.
- **24/7 Emergency Support:** Around-the-clock technical assistance for mission-critical operations.
- **Continuous Innovation:** Frequent updates and new features to stay ahead of evolving scientific and regulatory demands.



*LabDrive isn't just a file repository—it's a central hub for scientific collaboration, data integrity, and digital transformation in your lab.*



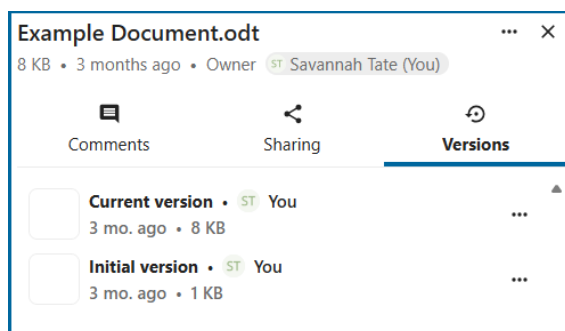
# Key Features

## Real-Time Collaboration

- Enables multiple users to edit the same document or data entry simultaneously.
- Supports collaborative authoring of SOPs, reports, and research documentation.

## Content & Version Control

- Automatically versions documents and enforces file-locking to prevent conflicts.
- Tracks all changes with detailed audit trails for compliance and accountability.
- Supports document change control and approval workflows.



## Project Sharing & Access Management

- Share individual files, folders, or full project workspaces with internal or external collaborators.
- Define and manage access permissions (view, edit, admin).
- Revoke access at any time and monitor shared activity for audit purposes.

## User Experience & Accessibility

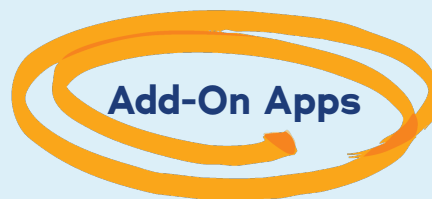
- Personalize dashboards to highlight relevant tasks, documents, and project updates.
- Accessible across all major platforms: Windows, macOS, Linux, Android, and iOS.
- Leverage customizable templates for workflows, forms, and data collection.
- Use advanced search filters and metadata tagging to locate information quickly.

## Workflow & Task Management

- Assign tasks to users and track progress, deadlines, and completion status.
- Visualize team workflows using Kanban boards.

## Integration Capabilities

- Operates as a core SDMS within the LabLynx Next-Generation Informatics Platform.
- Seamlessly integrates with LabLynx LIMS, ELN, analytics, and LabVia instrument connectivity.
- Ensures a unified, centralized ecosystem for data, documentation, and laboratory workflows.



## Available From LabLynx to Complement Your LabDrive

*You always have the option to upgrade to the LabLynx Lab Automation Suite, which offers several other applications that can be combined with LabDrive to meet even more of your lab's data management needs:*



Secure & Compliant application hosting platform  
(Comes standard with LabDrive)



Enterprise Single Sign-on (SSO)  
& Identity Access Management (IAM)  
(Comes standard with LabDrive)



LIMS/LIS for every type of laboratory



Lab Portal, submit samples,  
retrieve reports & results



Laboratory Automation, Integration  
& Laboratory Execution System (LES)



Laboratory Reporting, Analytics  
& Data Visualization Dashboards (BI)



On premise deployment

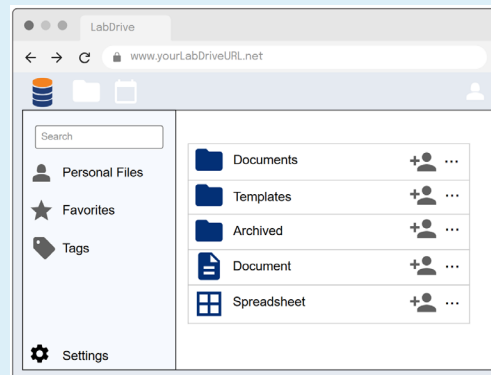


Services & Support Platform

## Benefits—Why Choose LabDrive?

LabDrive provides numerous advantages for all laboratory environments:

- **Version Control:** reduces audit prep effort and meets regulatory standards for document version control and change management.
- **Collaboration:** enable secure, traceable collaboration within your teams or externally based on permission controls.
- **Synchronized Documents across devices:** ensures consistent access anytime, anywhere.
- **Task Management:** drive efficiency & visibility in projects with KanBan card tracking.



## Use Cases

LabDrive is suited for a wide range of labs and scenarios, including:

- ✓ **Research Collaboration Across Institutions:** Securely shares datasets, protocols, and results with external collaborators, maintaining document integrity with version control and access control.
- ✓ **Regulated Lab Document Management (GxP/CLIA/CAP):** Synchronize all data files, track revisions and audit trails, prevent unauthorized edits on controlled documents, and standardize document templates.
- ✓ **Industrial R&D Lab Task Coordination:** Visualize project stages and tasks, easily collaborate on project documents across teams.
- ✓ **Lab Onboarding & SOP Training:** Organize documents, ensure access for appropriate users, mobile access for review in the lab, and more.

## Security & Compliance

LabDrive is built with **data security** and **compliance** in mind, meeting GDPR requirements for data protection. All communications are encrypted using HTTPS, and user authentication can be configured with advanced options like LDAP and SSO, standard with LabLynx OpenSocial.

With the choice between local or cloud deployment, labs can **maintain full control over their data infrastructure** and access policies. And with LabLynx secure cloud hosting, you can rest assured that all data are fully backed up regularly and your IT infrastructure is fully secure and maintained.

- Fully encrypted file storage
- Audit trails, version history, and change control align with regulatory requirements
- Works in tandem with identity & access controls



## Licensing & Support

LabDrive is based on an annual subscription which includes unlimited users. LabLynx provides professional support services directly, including training on functions and features, installation assistance, and custom development.

## GET STARTED TODAY

Discover how LabDrive can transform your lab's data and file management, planning, and collaboration. LabDrive empowers scientific teams with a secure, collaborative, and workflow-integrated SDMS—one that scales seamlessly from cloud to on-premises environments. It is engineered to work within the powerful LabLynx informatics suite, offering document control, teamwork features, task management, and full regulatory compliance support, ideal for modern laboratory operations. Whether you're looking to digitalize forms, automate file backups, ensure compliance or streamline audits, LabDrive offers the tools you need.

Contact us at [sales@lablynx.com](mailto:sales@lablynx.com) to start planning for your new LabDrive today!





TECHNICAL DATA IS SUBJECT  
TO CHANGE WITHOUT NOTICE.

REVISION DATE: 2025-12-20

LabLynx, Inc. is a global provider of Laboratory Informatics Solutions for all types of laboratories. Our focus is on delivering lab data management solutions that fit your lab's technical, functional, business and scientific workflow requirements. For more information visit [www.lablynx.com](http://www.lablynx.com) or email [sales@lablynx.com](mailto:sales@lablynx.com) or call 866-522-5969.

©2025 LabLynx, Inc. All Rights Reserved. LabLynx®, ELabELN™, and related marks are trademarks of LabLynx, Inc. This document may reference or interoperate with third-party technologies including Nextcloud®, ELabFTW®, and Node-RED®, whose respective copyrights, trademarks, and licenses remain the property of their owners.

Nextcloud source code and license: <https://github.com/nextcloud/server>

ELabFTW source code and license: <https://github.com/elabftw/elabftw>

Node-RED source code and license: <https://github.com/node-red/node-red>

All third-party software is subject to its own licensing terms. Information provided herein is for informational purposes only and is not legal, technical, or professional advice. Product features and specifications are subject to change without notice.

©LabLynx, Inc. | All rights reserved. This document is LabLynx, Inc. public information.