

The logo icon for ELabELN, consisting of a blue square with rounded corners containing three horizontal orange lines, with an orange document icon partially visible behind it.

ELabELN

Product & Pricing Guide



www.lablynx.com



Choosing an ELN For Your Lab

Electronic Lab Notebooks (ELNs) are transforming the way laboratories operate, offering benefits in data management and collaboration. While **all labs** can benefit from ELNs, research-intensive and collaborative environments stand to gain the most. By adopting an ELN tailored to their specific needs and workflows, labs can **unlock new levels of efficiency**, accuracy, and innovation. Investing in the right functionalities—such as robust security, integration capabilities, and user-friendly interfaces—ensures that the technology delivers its full potential, empowering researchers to focus on what they do best: **advancing science**.

A Laboratory Information Management System (LIMS) and an ELN serve **distinct purposes** in laboratory environments. While LabLynx offers both LIMS and ELN solutions and there is some functional overlap, a ELN is generally a better choice for documenting experiments and facilitating collaboration on research projects.



866.522.5969

3350 Riverwood Pkwy SE, Ste. 1900

Atlanta, GA 30339

www.lablynx.com

Contents

What is the LabLynx ELabELN?	4
Applications to Add On to the LabLynx ELabELN	9
What Makes the LabLynx ELabELN Unique?	11
Products, Services, Options, & Pricing	12
Get Started	14

What is the LabLynx ELabELN Enterprise Edition?

The LabLynx ELabELN Enterprise Edition uniquely delivers the best-in-class ELN functionality that is simply the most comprehensive. It consists of a suite of both open and proprietary applications that are seamlessly integrated together and provide configurability and extensibility so that you can implement the solution that fits your lab's exacting needs.



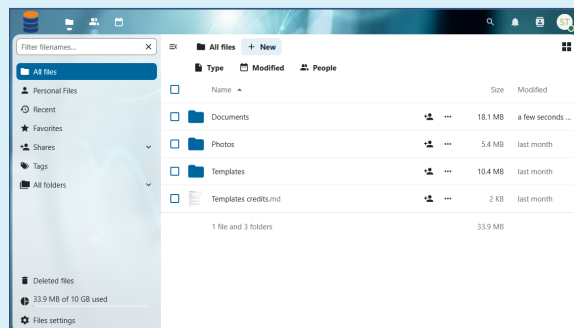
1 All-in-one Functionality

- **Structured Data Entry:** Organize data into projects, experiments, and tasks hierarchically.
- **Template Management:** Create, store, and reuse experimental protocols. Access or create libraries of reusable templates for common workflows.
- **Rich Text Editing:** Format text, include images, tables, and file attachments.
- **Electronic Signatures:** Authenticate entries with digital signatures.
- **Change Control:** Track changes to documents.
- **Cross-Referencing Entries:** Link related entries for easy navigation.

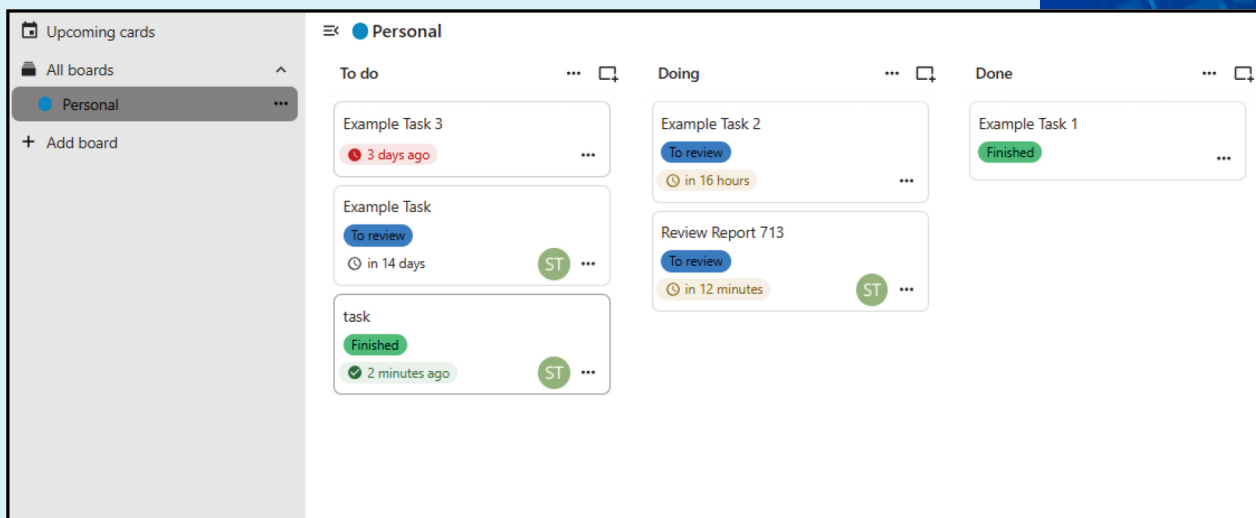
2 Collaboration and Sharing

- **Collaboration:** Multiple users can work on the same entry or document simultaneously in LabDrive.
- **Access Control and Permissions:** Customize roles and access levels for different team members.
- **Commenting and Feedback:** Comment on specific entries for team discussions.
- **Project Sharing:** Share projects with internal or external collaborators via LabDrive.

Screenshot of the LabDrive File Management portal.



Screenshot
of LabDrive
Kanban Board



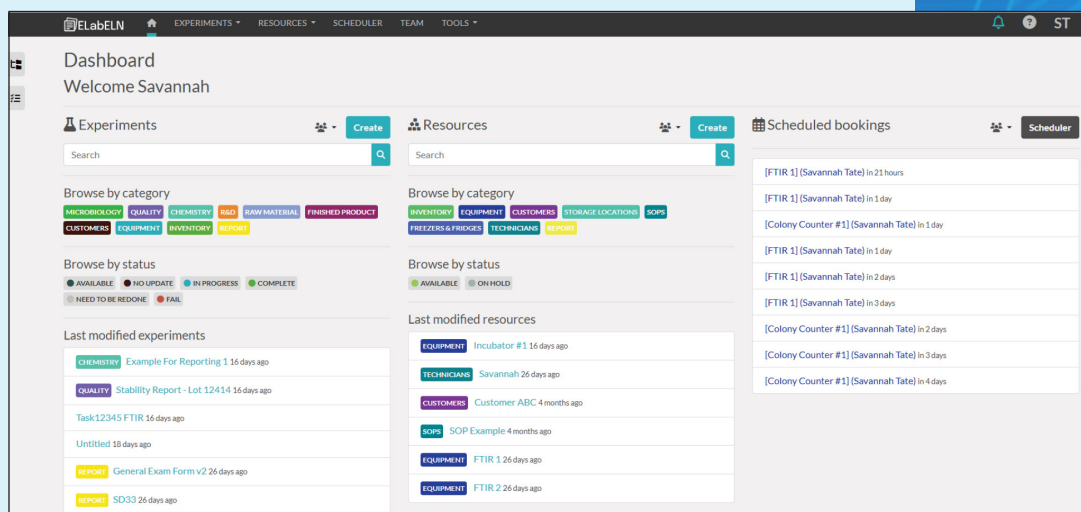
User Experience and Accessibility

- **Customizable Dashboard:** Personalized dashboard for quick access to important information.
- **Mobile and Tablet Support:** Access the platform on mobile devices.
- **Customizable Templates:** Adapt forms and workflows to suit your specific lab needs.
- **Search Filters:** Use advanced filters to narrow search results.

Workflow and Task Management

- **Task Assignment and Progress Tracking:** Assign tasks to team members and monitor the progress of individual tasks via LabDrive.
- **Kanban Boards:** Visualize workflows using Kanban boards via LabDrive.
- **Workflow Templates:** Create and reuse templates for workflows.
- **Milestone Management:** Set and track project milestones.
- **Time Tracking:** Log time spent on tasks or experiments.

Screenshot of the
ELN dashboard



Inventory and Sample Management

- **Inventory Management:** Manage stocks of reagents, samples, and consumables.
- **Barcode/QR Code Integration:** Generate and scan barcodes or QR codes for items.
- **Storage Documentation:** Identify the exact storage location of samples or reagents.
- **Expiry Documentation:** Identify expiration dates to avoid using expired items.
- **Custom Fields:** Add custom fields to inventory items for specific attributes.
- **Supplier Documentation:** Store supplier information for reagents and equipment.

Integration and Automation

- **Flow-Based Programming:** Utilize LabVia visual tool for wiring together devices, APIs, and services.
- **Workflow Automation:** Automate repetitive tasks using LabVia's event-driven architecture.
- **File Collaboration:** Implement LabDrive platform for file sharing and collaboration.
- **Office Suite Integration:** Integrated office suite for document editing and co-authoring within LabDrive.
- **Secure File Sharing:** Share files securely with flexible permissions and link protection in LabDrive.
- **Visual Report Designer:** Use the LabVista design tools to create interactive reports.
- **Data Binding:** Bind data from various sources to reports in LabVista.
- **Export Formats:** Export reports to multiple formats, including PDF, Excel, and Word, using LabVista.
- **Report Scripting:** Implement custom logic in reports through scripting in LabVista.
- **Interactive Dashboards:** Create interactive dashboards for data visualization in LabVista.

The image displays two screenshots from the LabLynx ELabELN system. The top screenshot shows the 'Resources' list interface, which includes a search bar, filter options (category, status, owner, tags), and a table of resources. Two resources are visible: 'Incubator #1' (Equipment, Available, 2024-12-04) and 'Customer ABC' (Customers, Available, 2025-03-18). The bottom screenshot shows the LabVia workflow editor, a visual programming tool with a grid of nodes and connectors. The workflow includes nodes for 'Init', 'Startup State', 'Get Data', 'Build File', 'Route', 'Log Msg', 'Link Out', 'Save File', 'write file', 'File Saved', 'Error Logging', 'Catch the rest', 'Set Msg 2', 'Slack Msg', 'Send Slack', 'Log Maintenance', 'Log Purge', 'Paths', 'split', 'purgepath', 'Log purge', 'Directory', 'File Stats', 'Check Age (45 days)', and 'Delete'.

Screenshots of the ELN Resources List (above) and LabVia (below).

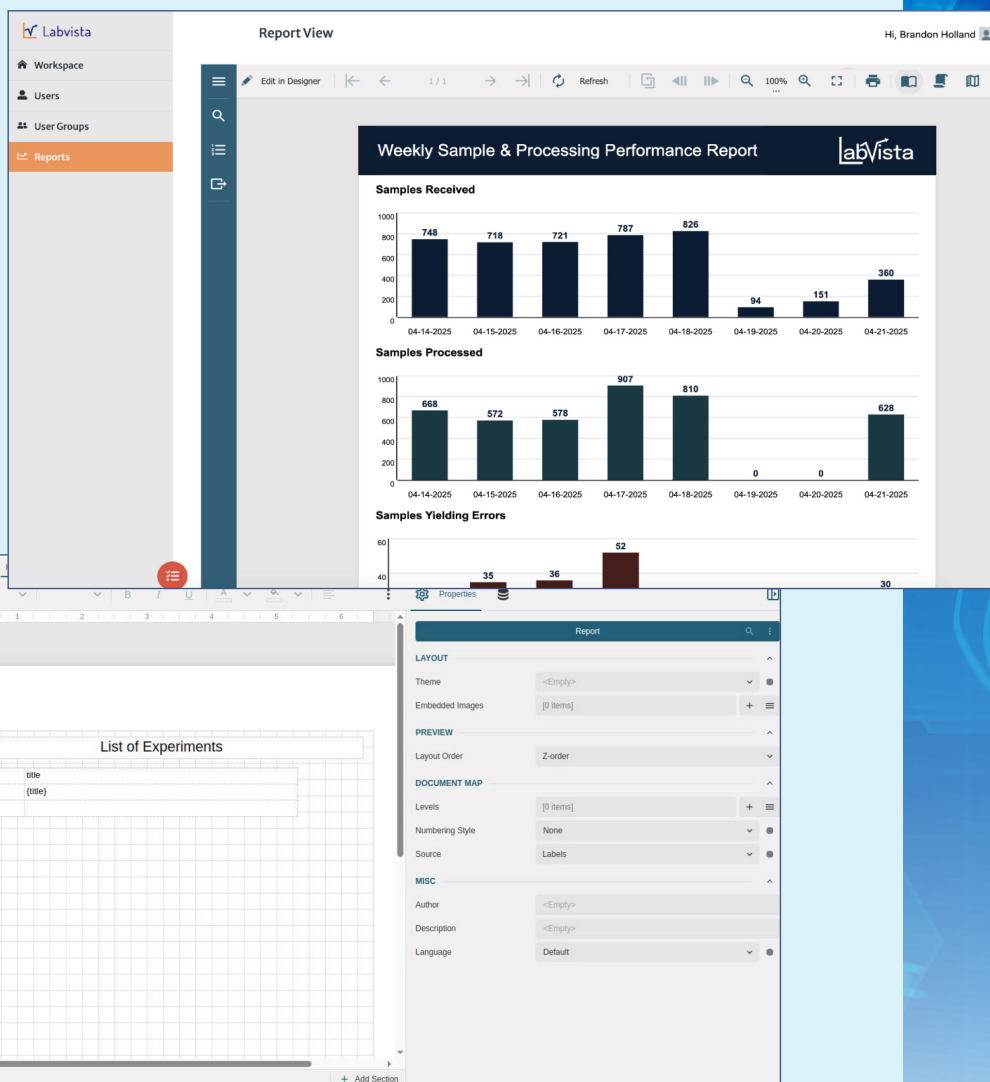
7 Security

- **Data Encryption:** Protect data with encryption both at rest and in transit.
- **User Authentication:** Implement multi-factor authentication for enhanced security.
- **Automated Backups:** Schedule regular backups to prevent data loss.
- **Data Recovery:** Restore data quickly in case of accidental deletion or corruption.
- **IP Protection:** Features to safeguard intellectual property rights.

8 Search and Retrieval

- **Advanced Search:** Search by keywords, tags, dates, or specific metadata.
- **Tagging System:** Use tags for easy categorization and retrieval of entries.
- **Favorites:** Mark important entries or projects as favorites for quick access.
- **Archived Data Access:** Retrieve data from archived or completed projects.

Screenshots of LabVista Report Designer.



Regulatory Compliance

- **21 CFR Part 11 & Electronic Signatures:** Compliant electronic records, user authentication, secure e-signatures, and audit trails ensure data authenticity, integrity, and traceability.
- **GLP & GMP Alignment:** Configurable workflows and standardized documentation align with regulatory expectations for laboratory and manufacturing environments.
- **ISO 17025, ISO 9001 & ISO 15189 Alignment:** Structured templates, document control, and quality linkages support traceable, audit-ready records.
- **ISO 27001 Information Security:** Supports data confidentiality, integrity, and availability through encryption, IAM/SSO, audit logging, and SOC 3-certified hosting.
- **Security & Privacy Controls:** Encryption in transit and at rest, role-based access, and SSO/IAM through the LabLynx Platform for HIPAA and GDPR compliance.
- **Integrated Quality Framework:** LabLynx combines audit logging, access control, and version-controlled records across all modules (ELN, LabDrive, LabVia, LabVista), ensuring end-to-end quality traceability and reproducibility.

Data Integration and Analysis

- **APIs for External Integration:** Use APIs to connect with LIMS, ELNs, or other software.
- **ELabELN REST API:** Create, read, update, and delete ELN content.
- **Data Visualization:** Generate charts, graphs, and dashboards for analysis via LabVista.
- **Metadata Management:** Record metadata for experiments, samples, and equipment.
- **Data Export:** Export data in PDF, as well as Excel, and Word using LabVista.
- **Custom Reports:** Generate detailed reports tailored to specific needs via LabVista.

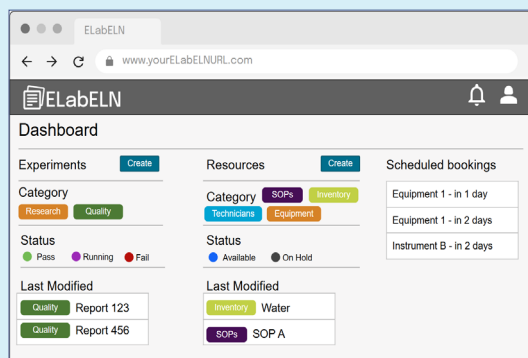
ELN Changelog

eLabFTW				
Changelog				
Date	User	Property changed	New value	
2025-10-24 17:32:01	Savannah Tate	metadata_inventory Used:	3	
2025-10-23 15:10:00	Brandon Holland	body	Depending on your instance configuration, the change in the body is possibly recorded in the revisions. See revisions page.	
2025-10-23 15:09:05	Brandon Holland	metadata	[{"elabftw":{"extra_fields_groups":[{"id":1,"name":"Receiving"}, {"id":2,"name":"Incubation"}, {"id":3,"name":"Packaging"}, {"id":4,"name":"Results"}]}, {"extra_fields":{"Incubation End":{"type":"datetime-local","value":"2025-02-20T09:04","group_id":2,"position":4,"required":true},"Incubator Used":{"type":"text","value":"","group_id":2,"position":1,"required":true},"Inventory Used":{"type":"items","value":8,"group_id":2,"position":3,"required":true},"Incubation Start":{"type":"datetime-local","value":"2025-09-04T09:26","group_id":2,"position":0,"required":true},"Condition Received":{"type":"text","value":"","group_id":1,"position":4},"Sample Received Date":{"type":"date","value":"2025-09-04","group_id":1,"position":3,"required":true},"Select the following":{"type":"select","value":["Example B","Example C"],"options":["Example A","Example B","Example C"],"allow_multi_values":true},"Incubation Temperature":{"type":"number","group_id":2,"value":"","units":"","unit":"","required":true}}]}	
2025-10-23 15:08:39	Brandon Holland	metadata	[{"elabftw":{"extra_fields_groups":[{"id":1,"name":"Receiving"}, {"id":2,"name":"Incubation"}, {"id":3,"name":"Packaging"}, {"id":4,"name":"Results"}]}, {"extra_fields":{"Incubation End":{"type":"datetime-local","value":"2025-02-20T09:04","group_id":2,"position":4,"required":true},"Incubator Used":{"type":"text","value":"","group_id":2,"position":1,"required":true},"Inventory Used":{"type":"items","value":8,"group_id":2,"position":3,"required":true},"Incubation Start":{"type":"datetime-local","value":"2025-09-04T09:26","group_id":2,"position":0,"required":true},"Condition Received":{"type":"text","value":"","group_id":1,"position":4},"Sample Received Date":{"type":"date","value":"2025-09-04","group_id":1,"position":3,"required":true},"Select the following":{"type":"select","value":["Example B","Example C"],"options":["Example A","Example B","Example C"],"allow_multi_values":true},"Incubation Temperature TEST":{"type":"number","unit":"","units":"","required":true}}]}	

APPLICATIONS *to add on to the*



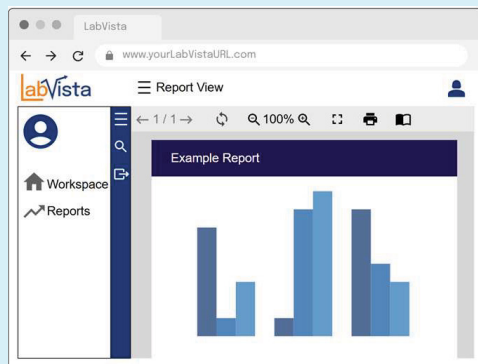
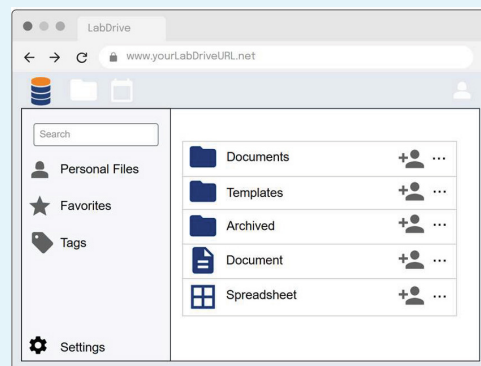
The **LabLynx Platform** is your central user management, Single Sign-on (SSO) and Identity Access Management (IAM) Platform. LabLynx provides secure user access to all of your LabLynx applications and functions. It provides add-on extensions and applications for collaboration, messaging, alerts, dashboards, AI, and much more.



With a comprehensive set of features and functions with the **ELabELN**, combined with configurability and extensibility, and the REST API, it delivers the capability for long-term usage in your research lab or small-throughput lab or startup. The Enterprise Edition includes additional functionality including system administration.



LabDrive synchronizes lab documents, datasets, and research materials across multiple devices seamlessly. Users can access their data from desktops, laptops, and mobile devices (including Windows, macOS, Linux, Android, and iOS) while ensuring that all files remain up to date and synchronized. This is particularly beneficial for labs managing vast amounts of data across different teams and locations.



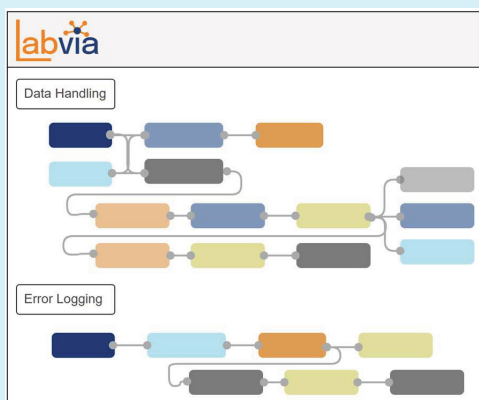
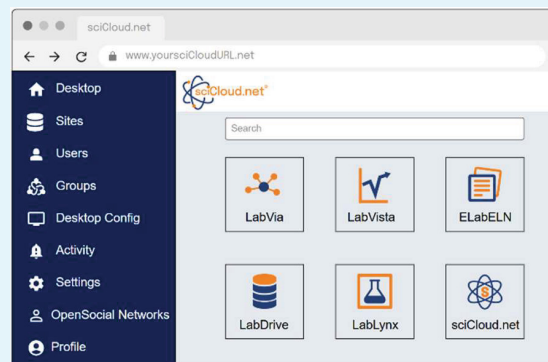
LabVista is the powerful analytics and reporting application in the LabLynx ELabELN Enterprise Edition, designed to provide actionable insights from laboratory data. By aggregating data from ELabELN, LabVia, LabDrive, and other sources, LabVista empowers laboratories to make informed decisions with ease.

APPLICATIONS *to add on to the*

ELabELN



sciCloud.net is the Cloud Application Platform on which a LIMS solution, specific to your laboratory is implemented. sciCloud.net provides the core technology, security and functionality that is common across all types of labs so that the LIMS solution specific to your lab can cover the functional lab areas that are important to you.



LabVia can connect to various APIs and databases, facilitating the exchange of data between systems and instruments. It can automate the upload of experimental data to centralized repositories, ensuring traceability and reducing manual entry errors. By leveraging LabVia's connectivity, laboratories can integrate diverse systems into a cohesive data ecosystem.



LabServer can be used for local, on premise deployment of your LabLynx ELabELN Enterprise Edition, including all relevant applications for your laboratory. Cloud backups can be managed by LabLynx or locally by your team. LabServer can be used as your LabVia hub device for instruments integrations as well.



LabLynx offers full support, maintenance and warranty, as well as implementation and any ad-hoc training, development and other technical services—all requested, managed and delivered through our **LiMShelp** platform.

What makes the LabLynx ELabELN unique?

The LabLynx ELabELN is a comprehensive solution designed to streamline data management and collaboration in scientific research. It offers unique features tailored to modern laboratory needs. You will find that much of what makes our solution unique is also available in other ELN solutions, but there is none that provides all of these capabilities and provides for an open ecosystem of add-ons that makes our solution virtually limitless.



Collaborative Capabilities

Share projects, notebooks, and experimental entries, facilitating seamless collaboration.

Customizable Templates

Create and implement custom templates suited to your specific workflows.

Advanced Data Management

Powerful data organization tools, including tagging, filtering, and cross-linking entries across projects.

Open APIs and Extensibility

Integrate seamlessly with other software and platforms, ensuring compatibility with existing IT infrastructures.

Robust Data Security

Data integrity and security through encrypted storage, role-based access controls.

Cross-Platform Accessibility

Accessibility from various devices, including desktops, tablets, and smartphones.

Scalability for Any Sized Team

Plans and features that cater to both small teams and enterprise-level organizations.

Inventory Management

Manage samples, reagents, and lab resources directly within the platform.

Regulatory Compliance

Compliance-ready framework includes timestamps, electronic signatures, audit trails, and user authentication and permissions.



ELabELN



Products, Services, Options, & Pricing

	Community Edition	Team Edition	Enterprise Edition
Pricing	Free	• \$100/month/user • 2 months free for annual subscription	• \$150/month/user • 2 months free for annual subscription
Number of users	Unlimited	Starting at 3+ Users	Starting at 5+ Users
Number of teams	1 team	Unlimited	Unlimited
LabLynx Single Sign-On/Identity and Access Management			
• LabLynx User Account Platform	✓ Included	✓ Included	✓ Included
• OpenSocial SSO/IAM	✓ Community	✓ Enterprise	✓ Enterprise
ELabELN Electronic Lab Notebook			
• ELabELN	✓ Community	✓ Team	✓ Enterprise
LabDrive SDMS Suite			
• LabDrive (includes 100GB)	✗ Not Available	✗ Not Available	✓ Included
• Secure FTP Server	✗ Not Available	✗ Not Available	✓ Included
LabVia LES, IoT, AI, Integration & Automation			
• LabVia Studio	✗ Not Available	✗ Not Available	✓ Included
• LabVia Cloud	✗ Not Available	✗ Not Available	✓ Included
• LabVia Hub (on-prem IoT Integration Device)	✗ Not Available	✗ Not Available	✓ Optional (\$1,495/yr/hub)
LabVista Reporting/BI/Analytics			
• LabVista Studio	✗ Not Available	✗ Not Available	✓ Included
LiMShelp Platform			
• LabLynx Press	✓ Included	✓ Included	✓ Included
• LabLynx Help Desk	✓ Included	✓ Included	✓ Included
• LiMShelp.com Hourly Services Request platform	✗ Not Available	✗ Not Available	✓ Included



ELabELN

Products, Services, Options, & Pricing

	Community Edition	Team Edition	Enterprise Edition
 sciCloud.net Cloud App Platform			
• sciCloud.net Cloud Server (inc. 50GB)	✗ Not Available	✗ Not Available	✓ Included
• Additional Servers Storage per 100GB	✗ Not Available	✗ Not Available	✓ Optional (\$1000/yr)
• LabServer On-Prem Server	✗ Not Available	✗ Not Available	✓ Optional (\$1,495/yr)
 LabLynx Professional Services			
• Managed Cloud Services	✓ Included	✓ Included	✓ Included
• System Maintenance	✓ Included	✓ Included	✓ Included
• Warranty	✓ Included	✓ Included	✓ Included
• Online Training Guide	✓ Included	✓ Included	✓ Included
• Training	✗ Not Available	✓ Optional (quoted)	✓ Included (quoted)
• Setup Assistance	✗ Not Available	✓ Optional (quoted)	✓ Included (quoted)
• Project & Account Management	✗ Not Available	✗ Not Available	✓ Hourly
• Integration & Automation	✗ Not Available	✗ Not Available	✓ Hourly
• Development & Customization	✗ Not Available	✗ Not Available	✓ Hourly
• Custom Reports	✗ Not Available	✗ Not Available	✓ Hourly
• Data Migration	✗ Not Available	✗ Not Available	✓ Hourly
• Validation	✗ Not Available	✗ Not Available	✓ Hourly
• Enterprise Support	✗ Not Available	✗ Not Available	✓ Hourly
• Maintenance & Warranty of Custom Development, Integrations, & Reports	✗ Not Available	✗ Not Available	✓ Optional: 20%/yr



ELNs are a strategic investment, calculated to create efficiencies that allow you to ultimately do more with the resources you have, bringing continuing return on your investment. To add additional pain in having to change your workflows to suit the new system should not be part of the deal.

The LabLynx ELabELN is designed with built-in flexibility, specifically aimed at delivering what your unique lab needs on your own terms, without a steep learning curve and major changes in how you work.



Get Started with ELabELN Community Edition



Onboarding with the ELabELN is as easy as a couple of clicks and you're ready to go!

STEP 1: Sign up for your community ELabELN account, FREE!

Go to www.elabeln.com and sign up for your free ELabELN Community Edition account.

STEP 2: Start setting up and using your ELabELN

You can immediately start using your ELabELN and access the online training guide. If you'd like to add hourly training, add additional teams or upgrade options, contact us at sales@lablynx.com.

As your organization evolves and requires expanded functionality, contact us at sales@lablynx.com to seamlessly upgrade to the ELabELN Team or Enterprise Editions.



Get Started

with ELabELN Team or Enterprise Edition



STEP 1: Contact us to get started

Fill out a **contact form** on our website or simply email us at sales@lablynx.com. We will promptly reply and get a meeting scheduled to learn about your lab and what you are looking for, and answer any questions you have about us, our solutions and the company.

STEP 2: Get a LabLynx tailored demo

Schedule an **in-depth demonstration** of our proposed solution that is tailored specifically for you. Everything is always documented—meetings are recorded and also AI-transcribed.

STEP 3: Sign up for your LabLynx account, FREE!

Sign up for a **LabLynx ELabELN account** without buying a thing and with absolutely no obligation, so you can access resources and any apps.

STEP 4: Try out LabLynx ELabELN with full support

We'll provide you with a "sandbox" ELabELN that you can **try out for as long as you want**, so that you can be absolutely sure it will work for your needs. And not only that, our team will support you during that trial, helping you learn how to set up experiments, resources and schedules, assign role-based access to your team and much more.

STEP 5: Order your LabLynx solution when you are ready

You can **begin your subscription** with your own ELN (and any other add-ons you like) right away, with no costs for the setup/configuration that we've already done together. Use the same system you have tailored to your processes and preferences.

STEP 6: Set up your Lab for success and go live!

If there are any additional setup items, or integrations, customizations, additional apps, etc., we can provide hourly services as you request them—either initially or any time you want! Our goal is the same as yours: to **get your system live and operational**—the way you want it—quickly and affordably.



TECHNICAL DATA IS SUBJECT
TO CHANGE WITHOUT NOTICE.

REVISION DATE: 2025-12-20

LabLynx, Inc. is a global provider of Laboratory Informatics Solutions for all types of laboratories. Our focus is on delivering lab data management solutions that fit your lab's technical, functional, business and scientific workflow requirements. For more information visit www.lablynx.com or email sales@lablynx.com or call 866-522-5969.

©2025 LabLynx, Inc. All Rights Reserved. LabLynx®, ELabELN™, and related marks are trademarks of LabLynx, Inc. This document may reference or interoperate with third-party technologies including Nextcloud®, ELabFTW®, and Node-RED®, whose respective copyrights, trademarks, and licenses remain the property of their owners.

Nextcloud source code and license: <https://github.com/nextcloud/server>

ELabFTW source code and license: <https://github.com/elabftw/elabftw>

Node-RED source code and license: <https://github.com/node-red/node-red>

All third-party software is subject to its own licensing terms. Information provided herein is for informational purposes only and is not legal, technical, or professional advice. Product features and specifications are subject to change without notice.

©LabLynx, Inc. | All rights reserved. This document is LabLynx, Inc. public information.